

## INTENDED USE

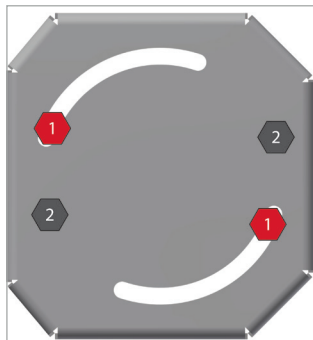
Top plate for attaching instruments to the top of the Instruments stand. Two options for top plate are available; A standard top plate for a weather protecting house, and a top plate with a pivotable extension arm.

## INSTRUCTION FOR USE

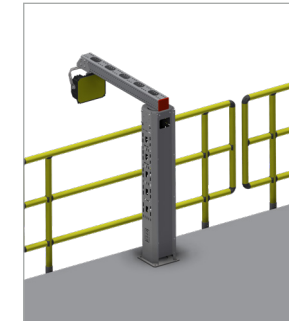
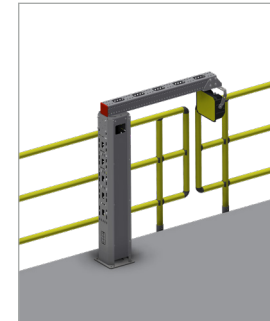
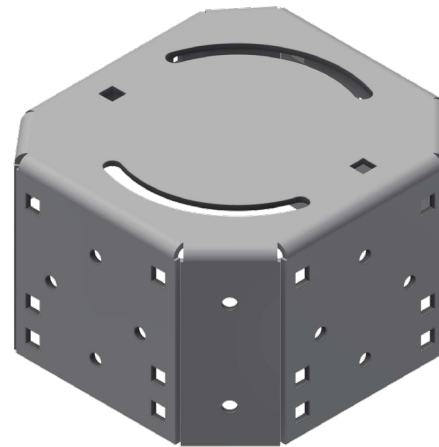
Install the Top plate to the Tower top using the bolts provided with the OIS Instrument stand.

## INSTRUCTIONS FOR OPERATING THE PIVOTABLE ARM:

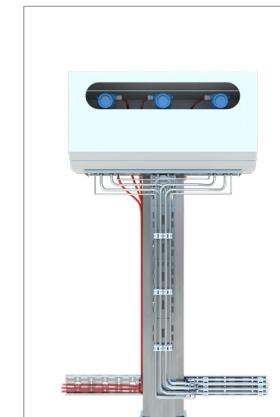
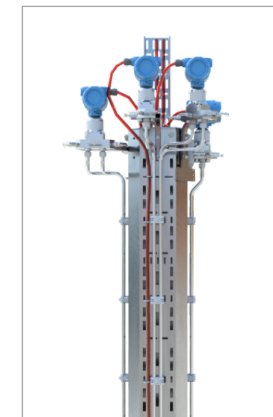
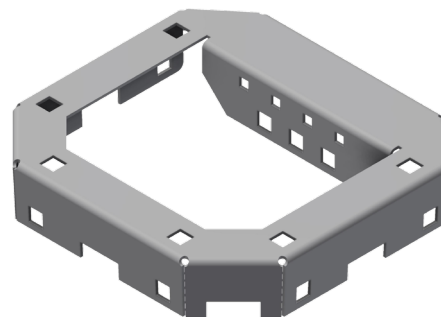
1. Unscrew and remove fixed bolts (2).
2. Loosen service bolts (1).
3. Turn the arm to a service position.
4. After service reverse the previous steps.



User Guide for Bolts:  
Recommended Torque



Top Plate for pivotable arm. Typically used together with a instrument stand and a CH100-3Q (SHS) to allow a Floodlight to illuminate a platform sign. Allows the arm to be rotated 90 degrees from the fixed position for easy and safe service.



Standard Top plate for instrument stand. Suitable for installing weather house (six holes on top of the plate), strip cable (hole pattern in the centre) or mount a Tray or Mekano® rail vertically (hole pattern in the centre).