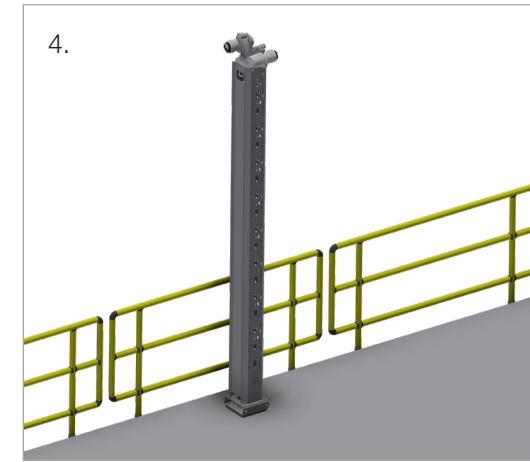
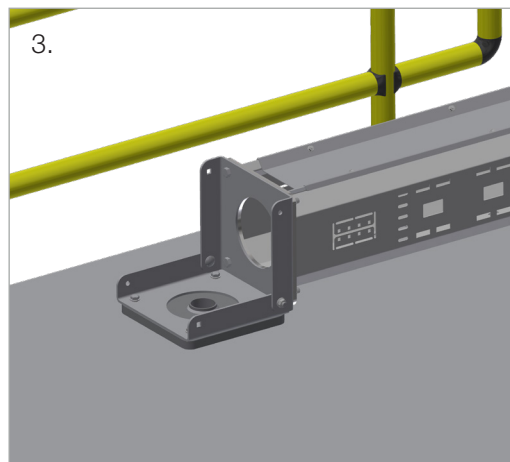
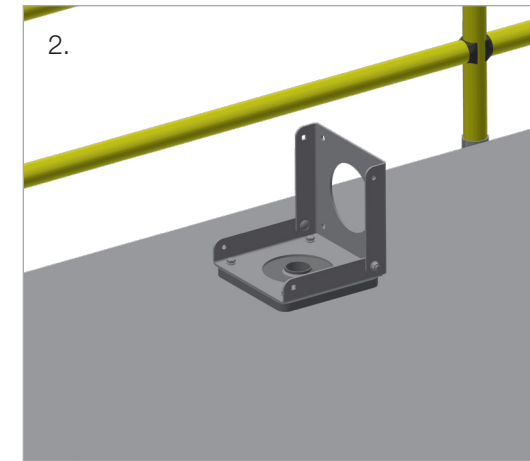
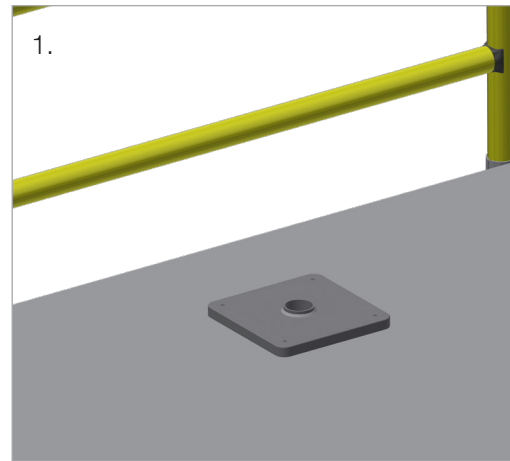


INTENDED USE

Tilt bracket for Instrument Stands and Equipment Tower that enables the base of the structure to be tilted. This feature allows bringing the body and top of the tower closer to the floor level, for easy maintenance on the equipment attached to it. No access equipment needed for installation and maintenance.

INSTRUCTION FOR USE

1. Install doubling plate with or without MCT transit for cases with thin metal mounting surface. For installation on rigid H beam the tower can be installed directly by welding of Hilti F-BT. In this case this step can be skipped. See note on ØI-RD-UG-EN-0391 regarding structural stability for doubling plate fixing.
2. Open the hinge by loosening 2 of the M12 bolts on one side as shown, and remove the other 2. Fix the hinge to the doubling plate with 4xM10 bolts.
3. Fix the tower to the hinge with 4xM10x25 lockingbolt.
4. Raise the tower carefully and fix with the remaining M12 bolts removed previously.



User Guide for Bolts:
Recommended Torque

Note:

HSE: The tower can be lowered for maintenance with two people under normal conditions. Fall arrest and access barrier restrictions must be considered as part of the maintenance responsible risk analyses prior to works starting. For safety Make a «pigtail or loop» on the cable in order to prevent bending when installing the tower.