

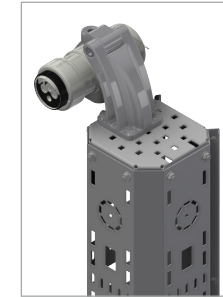
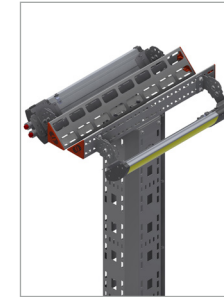
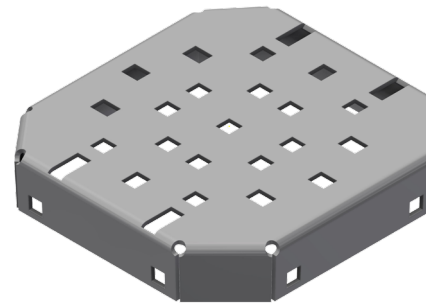
INTENDED USE

Top plate for attaching equipment to the top of OET Equipment Towers. Flexible hole pattern for fixing equipment directly onto the top plate.

INSTRUCTION FOR USE

Install the Top plate to the Tower top using the bolts provided with the OET Equipment tower.

Install the equipment. Select holes matching the equipment to the top plate. Where options for holes are available, position the equipment as close to the centre of the plate as possible. Bolts for fixing equipment are available to order.



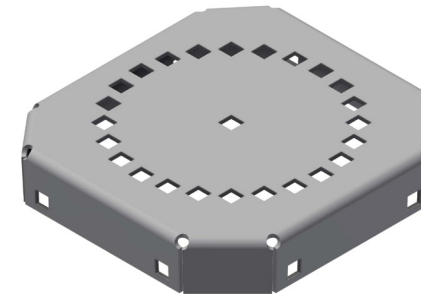
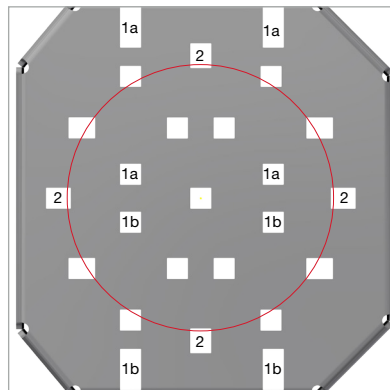
Standard Top plate for equipment tower.

EXAMPLE OF HOLE PATTERNS FOR THE STANDARD TOP PLATE FOR DIFFERENT EQUIPMENT:

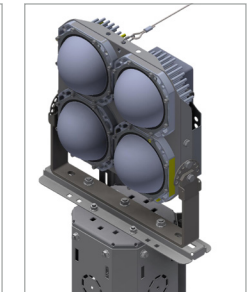
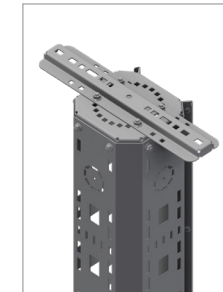
Number 1a/1b: Hole pattern for Line detector.

Number 2: Hole pattern for CCTV.

Circle: Floodlight bracket (59324,59325) can be positioned with 30° step using holes highlighted by the circle and the center hole.



Top plate with hole pattern of 15° increment. Floodlight bracket (59324,59325) for fixing the Floodlight of ones choice.



Floodlight bracket (59324,59325) for fixing the Floodlight of ones choice. Compatible with both Top plates.



User Guide for Bolts:
Recommended Torque