

INTENDED USE

Equipment tower with stable construction designed to withstand vibration in the harshest of climates. Integrated stable design reduces engineering time and on-site fabrication and modification.

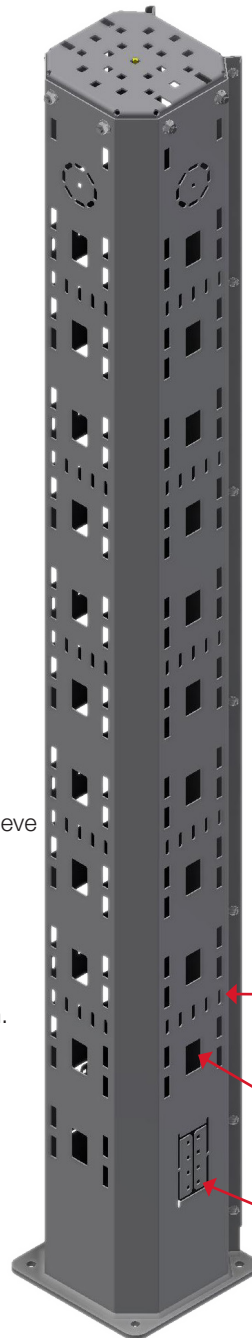
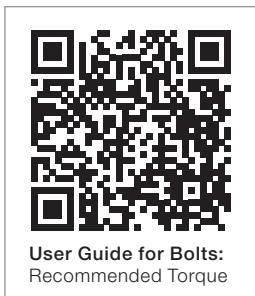
INSTRUCTION FOR USE

1. Weld the doubling plate structure according to User guide for Doubling plate: ØI-RD-UG-EN-0391.
2. Post-paint, attach the main body to the doubling plate using 4xM10 hex bolts, optionally add 4 washes between the main body and the doubling plate to encourage drainage from the bottom of the tower.
3. Top Plate and additional equipment are fitted.
4. Cables / pipes are routed. Rubber grommets are available to route cables safely through the tower structure.
5. Add the Back Plate to finish the installation of the Equipment Tower, us supplied M6X12 bolts.

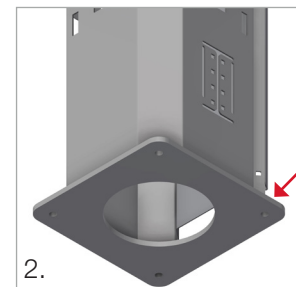
Note:

The equipment tower must be used with a top plate to achieve proper stability. The top plate is not included when ordering the equipment tower and needs to be ordered separately.

The structure the Doubling Plate is welded to needs to be sufficiently strong, and can affect the level of vibration experienced. See ØI-RD-UG-EN-0391 for more information.

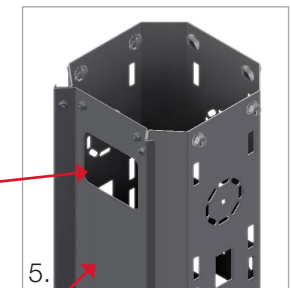


3. Fits most commonly used equipment on body without need of extra brackets.



2.

Bottom plate with holes to fit M10 doubling plate 250x250.
Large centre-hole compatible with Hilti MCT.
Doubling plate with MCT available.



5.

Access hole for bolting equipment without removing backplate.

ETIN™ compatible hole pattern for direct mounting of tubing clamps.

Large holes compatible with edge protector for cable routing through Equipment Tower.

Fixing and opening for 100mm wide cable tray.

Removable backplate for easy access and installation of internal cable routing.

Instrument Stand