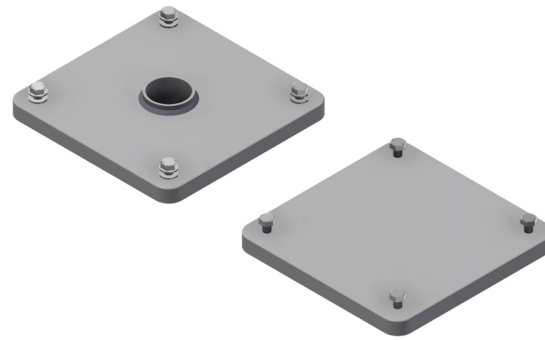


INTENDED USE

Doubling plate for bolted starter bracket, instrument stand or equipment tower. The Doubling plate reduce stress concentrations by adding more area. Available as standard or with hole for cable transit that is compatible with Hilti Plug seal CFS-T RRS 50 GS 60mm. Install the Doubling plate preferably in the early phase of the project.

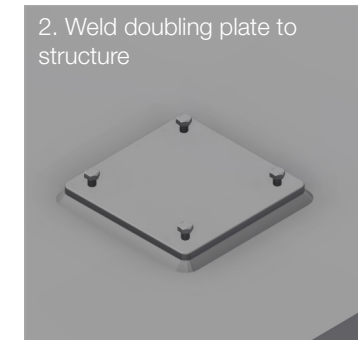
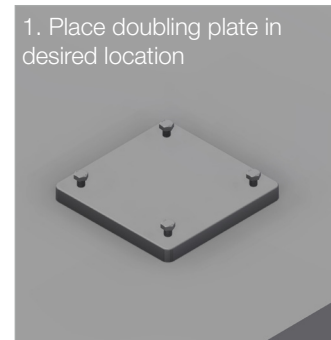


INSTRUCTION FOR USE

Weld doubling plate to structure according to the welding procedure specification (WPS). Sandblast/clean before painting.

Doubling plate for welded starter brackets: Make sure to weld welded starter bracket to plate before painting. Cover starter bracket with sleeve for painting.

Doubling plate for bolted starter brackets: Illustrated in step 1-6. Leave in supplied bolts during sandblasting/cleaning and painting. These are for keeping holes free from debris only. Remove and discard before attaching bolted starter bracket with new bolts.



Note:

The structural stability of the equipment stand is dependent upon the capacity of the base structure. It is therefore important to consider the doubling plate is sufficiently supported overload bearing structure. In some cases when attaching doubling plate only to thin deck plate, the moment generated by wind and dead loads can cause unwanted movement. Whilst this can be managed by bracing wire or supports, good design of the doubling plate junction to structure can prevent this.



User Guide for Bolts:
Recommended Torque